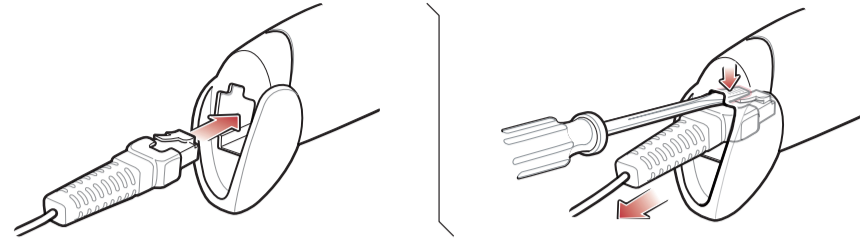


LS2208 Quick Start Guide

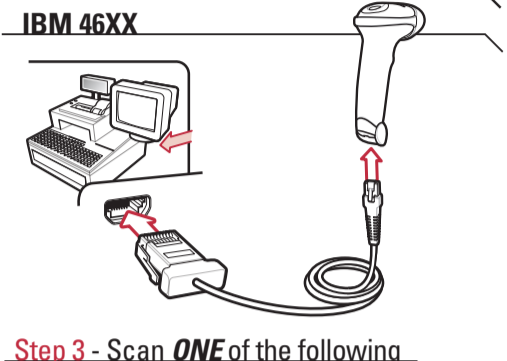
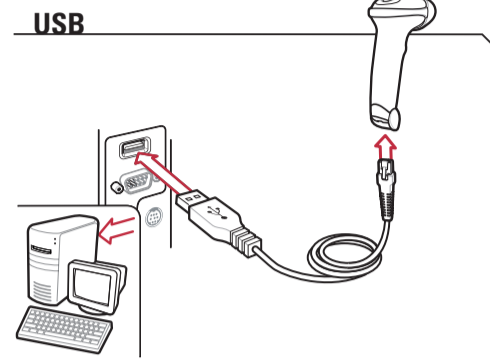
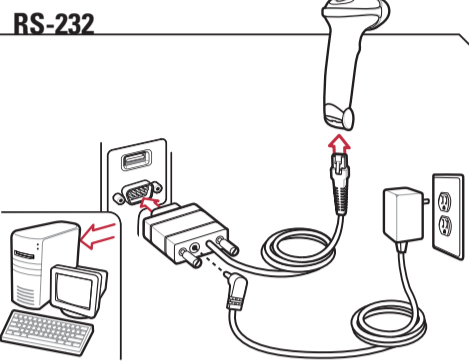
<http://www.symbol.com/ls2208>



Step 1 - Cord Attachment/Removal



Step 2 - Connect to Host



Step 3 - Scan **ONE** of the following



STANDARD RS-232



ICL RS-232



NIXDORF RS-232 MODE A



NIXDORF RS-232 MODE B



FUJITSU RS-232



OPOS/JPOS

Step 3 - Scan **ONE** of the following

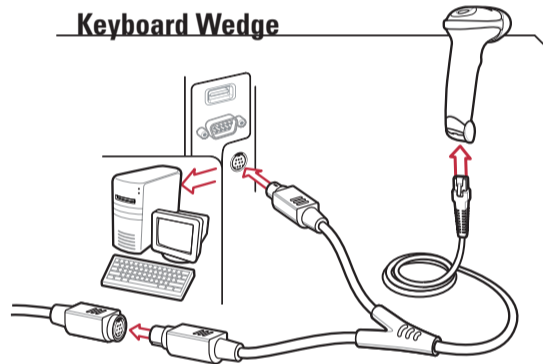


HID KEYBOARD EMULATION



IBM HAND-HELD USB

Keyboard Wedge



Step 3 - Scan the following



IBM PC/AT and IBM PC COMPATIBLE

Step 3 - Scan **ONE** of the following

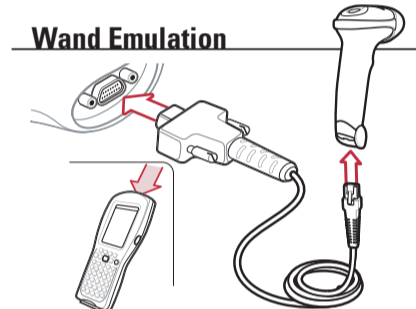


PORT 5B



PORT 9B

Wand Emulation



Step 3 - Scan **ONE** of the following



SYMBOL WAND



ENABLE CONVERT TO CODE 39



DISABLE CONVERT TO CODE 39

Miscellaneous Settings

Set Defaults



SET DEFAULTS

Carriage Return/Line Feed



SCAN OPTIONS



<DATA><SUFFIX>



ENTER

LED Indications

Off

Scanner is on and ready to scan, or no power to scanner

Green

Bar code is successfully decoded

Red

Transmission error

Beeper Indications

Standard Use

Low/medium/high beep

Power up

Short medium beep

Bar code decoded

4 long low beeps

Transmission error detected, data is ignored

Parameter Menu Scanning

High/low/high/low beep

Successful parameter setting

High/low beep

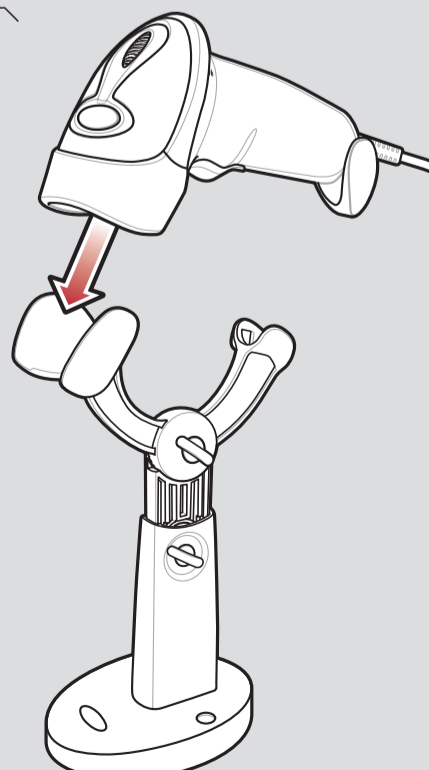
Correct programming sequence performed

Low/High beep

Incorrect programming sequence or 'Cancel' bar code scanned

Accessories

IntelliStand



Troubleshooting

Scanner not working

No power to scanner

Check system power; ensure power supply, if required, is connected

Incorrect interface cable used

Ensure that correct interface cable is used

Interface/power cables are loose

Ensure all cable connections are secure

Scanner decoding bar code, but data not transmitting to host

Scanner not programmed for correct host interface

Scan appropriate host parameter bar codes

Interface cable is loose

Ensure all cable connections are secure

Scanned data incorrectly displayed on host

Scanner not programmed for correct host interface

Scan appropriate host parameter bar codes

Scanner not decoding bar code

Scanner not programmed for bar code type

Ensure scanner is programmed to read type of bar code being scanned

Bar code unreadable

Ensure bar code not defaced; try scanning test bar code of same bar code type

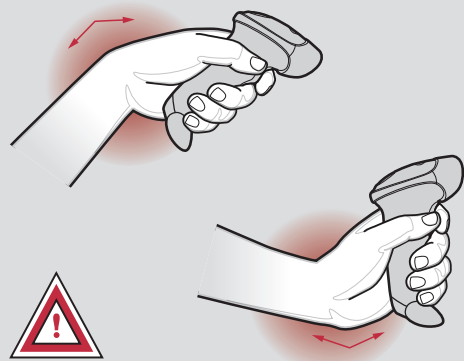
Distance between scanner and bar code incorrect

Move scanner closer to or further from bar code

Optimum Arm Position

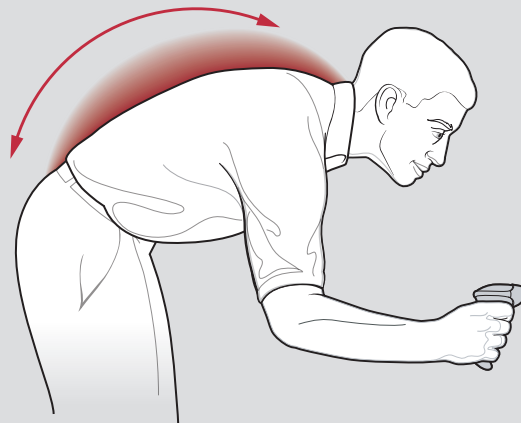


Avoid Extreme Wrist Angles



AVOID EXTREME WRIST ANGLES

Avoid Bending



AVOID BENDING

Avoid Reaching



AVOID REACHING

Ergonomic Recommendations

Caution: In order to avoid or minimize the potential risk of ergonomic injury follow the recommendations below. Consult with your local Health & Safety Manager to ensure that you are adhering to your company's safety programs to prevent employee injury.

- Reduce or eliminate repetitive motion
- Maintain a natural position
- Reduce or eliminate excessive force
- Keep objects that are used frequently within easy reach
- Perform tasks at correct heights
- Reduce or eliminate vibration
- Reduce or eliminate direct pressure
- Provide adjustable workstations
- Provide adequate clearance
- Provide a suitable working environment
- Improve work procedures.

Regulatory Information

©2005 SYMBOL TECHNOLOGIES, INC. All rights reserved.

Symbol reserves the right to make changes to any product to improve reliability, function, or design. Symbol does not assume any product liability arising out of, or in connection with, the application or use of any product, circuit, or application described herein. No license is granted, either expressly or by implication, estoppel, or otherwise under any patent right or patent, covering or relating to any combination, system, apparatus, machine, material, method, or process in which Symbol products might be used. An implied license exists only for equipment, circuits, and subsystems contained in Symbol products. Symbol and the Symbol logo are registered trademarks of Symbol Technologies, Inc. Other product names mentioned in this manual may be trademarks or registered trademarks of their respective companies and are hereby acknowledged. Symbol Technologies, Inc., One Symbol Plaza, Holtsville, N.Y. 11742-1300, <http://www.symbol.com>

Patents

This product is covered by one or more of the patents listed on the website: www.symbol.com/patents.

Service Information

Before you use the unit, it must be configured to operate in your facility's network and run your applications.

If you have a problem running your unit or using your equipment, contact your facility's Technical or Systems Support. If there is a problem with the equipment, they will contact the Symbol Support Center:

- | | |
|--|---|
| United States | 1-800-653-5350 or 1-631-738-2400 |
| Canada | 905-629-7226 |
| United Kingdom | 0800 328 2424 |
| Asia/Pacific | +65-6796-9600 |
| Australia | 1-800-672-906 |
| Austria/Österreich | 1-505-5794-0 |
| Denmark/Danmark | 7020-1718 |
| Finland/Suomi | 9 5407 580 |
| France | 01-40-96-52-21 |
| Germany/Deutschland | 6074-49020 |
| Italy/Italia | 2-484441 |
| Mexico/México | 5-520-1835 |
| Netherlands/Nederland | 315-271700 |
| Norway/Norge | +47 2232 4375 |
| South Africa | 11-8095311 |
| Spain/España | 91 324 40 00 (Inside Spain)
+34 91 324 40 00 (Outside Spain) |
| Sweden/Sverige | 84452900 |
| Latin America Sales Support | 1-800-347-0178 (Inside US)
+1-954-255-2610 (Outside US) |
| Europe/Mid-East Distributor Operations | |
| Contact local distributor or call | +44 118 945 7360 |

For the latest version of this guide go to: <http://www.symbol.com/manuals>.

Laser Labels

In accordance with Clause 5, IEC 825 and EN60825, the following information is provided to the user:

ENGLISH CLASS 1 CLASS 2	CLASS 1 LASER PRODUCT LASER LIGHT DO NOT STARE INTO BEAM CLASS 2 LASER PRODUCT	HEBREW רמה 1 מוצר לייזר רמה 1 רמה 2 מוצר לייזר רמה 2 אין להביט אל תוך הזרם מוצר לייזר רמה 2
DANISH / DANSK KLASSE 1 KLASSE 2	KLASSE 1 LASERPRODUKT LASERLYF SE IKKE IND I STRÅLEN KLASSE 2 LASERPRODUKT	ITALIAN / ITALIANO CLASSE 1 CLASSE 2
DUTCH / NEDERLANDS KLASSE 1 KLASSE 2	KLASSE-1 LASERPRODUKT LASERLICHT NIET IN STRAAL STAREN KLASSE-2 LASERPRODUKT	NORWEGIAN / NORSK KLASSE 1 KLASSE 2
FINNISH / SUOMI LUOKKA 1 LUOKKA 2	LUOKKA 1 LASERTUOTE LASERVALO ÄLÄ TUJOTA SÄDETTÄ LUOKKA 2 LASERTUOTE	PORTUGUESE / PORTUGUÊS CLASSE 1 CLASSE 2
FRENCH / FRANÇAIS CLASSE 1 CLASSE 2	PRODUIT LASER DE CLASSE 1 LUMIERE LASER NE PAS REGARDER LE RAYONNEMENT PRODUIT LASER DE CLASSE 2	SPANISH / ESPAÑOL CLASE 1 CLASE 2
GERMAN / DEUTSCH KLASSE 1 KLASSE 2	LASERPRODUKT DER KLASSE 1 LASERSTRAHLEN NICHT DIREKT IN DEN LASERSTRAHL SCHAUEN LASERPRODUKT DER KLASSE 2	SWEDISH / SVENSKA KLASS 1 KLASS 2
JAPANESE / 日本語 第1種 第2種	第1種 レーザー製品 レーザー光線 光線を見つめないでください 第2種 レーザー製品	CHINESE / 简体中文 1类 2类
		KOREAN / 한국어 1등급 2등급

Regulatory Information

All Symbol devices are designed to be compliant with rules and regulations in locations they are sold and will be labeled as required.

Any changes or modifications to Symbol Technologies equipment, not expressly approved by Symbol Technologies, could void the user's authority to operate the equipment.



Laser Devices

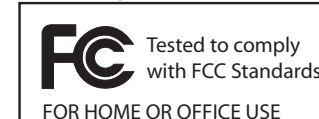
Symbol products using lasers complies with 21CFR1040.10 and 1040.11, EN60825-1:1994+ A1:2002 +A2:2001 and IEC60825-1:1993+A1:1997+A2:2001. The laser classification is marked on one of the labels on the product.

Class 1 laser devices are not considered to be hazardous when used for their intended purpose. The following statement is required to comply with US and international regulations:

Caution: Use of controls, adjustments or performance of procedures other than those specified herein may result in hazardous laser light exposure.

Class 2 laser scanners use a low power, visible light diode. As with any very bright light source, such as the sun, the user should avoid staring directly into the light beam. Momentary exposure to a Class 2 laser is not known to be harmful.

Radio Frequency Interference Requirements



Note: This equipment has been tested and found to comply with the limits for a Class B digital device pursuant to Part15 of the FCC rules. These limits are designed to provide reasonable protection against harmful interference in a residential installation. This equipment generates, uses and can radiate radio frequency energy and, if not installed and used in accordance with the instruction manual, may cause harmful interference to radio communications. However there is no guarantee that interference will not occur in a particular installation. If this equipment does cause harmful interference to radio or television reception, which can be determined by turning the equipment off and on, the user is encouraged to try to correct the interference by one or more of the following measures:

- Reorient or relocate the receiving antenna
- Increase the separation between the equipment and receiver
- Connect the equipment into an outlet on a circuit different from that to which the receiver is connected
- Consult the dealer or an experienced radio/TV technician for help.

Radio Frequency Interference Requirements – Canada

This Class B digital apparatus complies with Canadian ICES-003. Cet appareil numérique de la classe B est conforme à la norme NMB-003 du Canada.

Marking and European Economic Area (EEA)

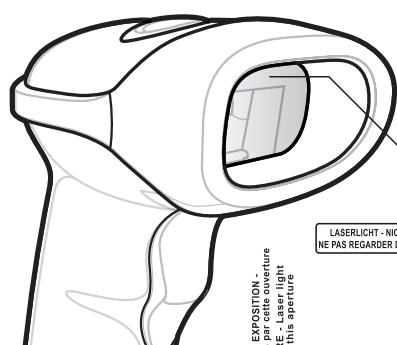


Statement of Compliance

Symbol Technologies, Inc., hereby declares that this device is in compliance with all the applicable Directives, 89/336/EEC, 73/23/EEC. A Declaration of Conformity may be obtained from <http://www2.symbol.com/doc>



72-71882-01 Rev A April 2005



LASERLICHT - NICHT IN DEN STRAHL BLICKEN. LASER KLASSE 2 LUMIERE LASER - NE PAS REGARDER DANS LE FAISCEAU. APPAREIL A LASER DE CLASSE 2 430-680nm 1 mW

EVITER TOUTE EXPOSITION - Luminer laser émis par cette ouverture n'est émis que de cette ouverture

