

CIPHER LAB
Smarter

8600 series



New Generation of COS Terminals

Designed for the demanding needs of warehouse, distribution center and manufacturing industry, the CipherLab 8600 series combines functionality, ruggedness, and mobility all into one terminal with easy-to-use features. The 8600 series operates with the CipherLab Operating System (COS), which reduces redundant system programming and fulfills serious AIDC applications. Its compact design is shelled with durability which makes it easy to move around. Along with versatile features and value-added software, 8600 series is an ideal companion for your work force and will undoubtedly simplify their tasks and increase their overall productivity.



8600 series

New Generation of COS Terminals



New Generation: The 8600 Series

The 8600 series mobile computer is a pioneer product of new generation. It is a combination of functionality, ruggedness, and mobility rolled all into one efficient device. The new 8600 has a color display that defines background and text with various colors to improve readability and support rich data management tasks. It runs on CipherLab OS to reduce redundancy in programs and applications for users. A rugged protection standard is in place to fully protect the 8600's functions and features. A modular charging / communication system and swappable keypad provides flexible configuration. Along with all these features, the Forge Application Generator designed for the 8600 provides new and updated benefits for productivity.



Swappable Keypad

Durability and Ruggedness for Excellent Protection

The 8600 series mobile computer is specifically designed with top durability in mind. Being compact and ergonomic, it's extremely rugged with IP65 standard which is capable of enduring exposure to dust, dirt and water jets. It can withstand 1.8 m drops onto concrete and also endure up to 1,000 tumbles at 1 m, which ensures efficiency in harsh conditions and protection from accidental drops or other unexpected damages. These protection features make the 8600 series one of the toughest of its kind in the market

today. The 8600 series' rugged features also have the optional hard shell that gives extra protection and ease of grip. The LCD display is covered by a polycarbonate panel protector for extra protection from hits and accidents. With all of these rugged capabilities, the 8600 series proves to be a great asset under harsh environments and can greatly reduce possible replacement costs due to unexpected damages.

Flexible Keypad and Modular System Designs Built with Compatibility

The 8600 series' flexible design comes with swappable keypads which give the 8600 series the power to easily swap between 29 or 39 keys when it is necessary. The 8600 series also comes equipped with a modular system which provides various combinations of charging / communication cradles and battery chargers. This makes the initial configuration modification very simple. This flexible design will also assist in reducing the inventory level while providing more cost-effective re-configurations for end users. Additionally, it will also make repair and replacement process easier and quicker.



Modular Charging and Communication System

Ergonomic and Lightweight Design

The 8600 series is purposely designed with ergonomics and lightweight to provide more flexible mobility for its users. Weighing only approximately 240 grams, it allows for comfortable operation all-day with maximum mobility. It also has an optional pistol-grip that the users can employ for easier operation of intensive scanning to improve productivity.



Versatile Reader Options with Long-lasting Power

The 8600 series is equipped with versatile reader options in linear imager, laser and 2D imager to ensure flexible assistance with all your scanning demands. It also comes with optional RFID reader option to improve efficiency of inventory management for warehouse and distribution centers or apply for asset management in challenging environments. Having long lasting power along with these capabilities can absolutely provide an efficient solution to wider data collecting demands.



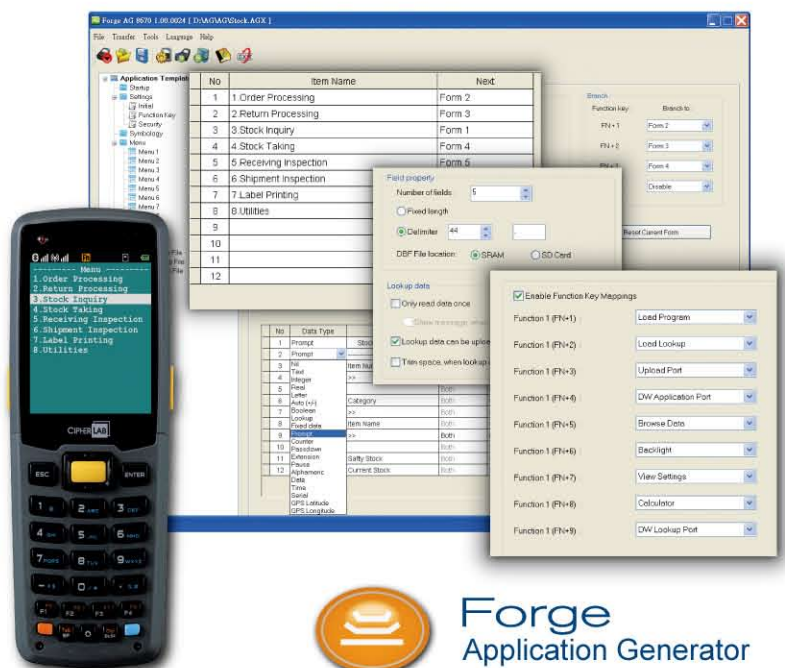
Smooth Operation with Flexible Wireless Communications

WLAN security proven 802.11 b/g/n technology and Bluetooth® communication V4.0 dual mode help deliver real-time quality data transmission. The 8600 series is compatible with the most up-to-date wireless technology. The 8600 series also comes with GPS as an option which is unique among other products of its kind. When it is required, this GPS feature can be engaged to improve accuracy of outdoor asset management and give field workers the ability to provide more complete information for management anywhere.



Value-added Software for Quick Start-up and Efficient Operation

The 8600 series is equipped with the Forge Application Generator which is designed for simple dealing with sequences of input, data processing and output. Additionally, the application's running sequences could be simulated on PC. Users can easily create an application without worrying about writing any program codes. It also comes with Text Browser which gives the 8600 the ability to support more web-based applications. The Text Browser has the capability of rendering pages with text related HTML tags, and makes IT technicians easily maintain centralized application. The 8600 series is supported by central remote management software, Remote Console, which enables the PC host to manage and maintain multiple mobile devices and reduce time for the IT management in wide-spread deployment. The 8600 series is also equipped with some typical user applications to help with easy startup and provide you with more efficient operation.



8600 series

New Generation of COS Terminals



		8600	8630	8660	
Performance	CPU	ARM Cortex-M3			
	Program memory	16MB Flash			
	Data memory	8MB / 16MB SRAM			
	Expansion	micro SD slot with SDHC support			
	Operating power	Rechargeable 3.7V 1100mAh / 2200mAh Li-ion battery			
	Working hours ¹ (1100mAh / 2200mAh)	32 / 64	12 / 24 ²	17 / 34 ³	18 / 36
	Data retention	25 days			
	Alert	Two programmable dual-color LEDs (red / green and blue / green), vibrator			
	Speaker	0.5W, 80dB@2KHz			
	Wireless communication	WLAN	--	IEEE802.11 b / g / n	--
WLAN security		--	WEP, EAP, WPA-PSK, WPA2-PSK	--	
WPAN		--	Bluetooth® V4.0 Dual mode (2.1+EDR / BLE)	Bluetooth® V4.0 Dual mode (2.1+EDR / BLE)	
Bluetooth® profile		--	SPP, DUN, HID	SPP, DUN, HID	
GPS (Optional)		GPS JN3, Internal antenna			
Data capture	Barcode scanning	Linear imager / Laser / 2D imager			
	RFID (read / write) (Optional)	Frequency: 13.56MHz, Support tags: ISO 14443A, ISO 14443B, ISO 15693			
Physical characteristics	Display	2.83" color LCD, 240 x 320 pixels, TFT with programmable LED backlight			
	Keypad	Swappable, 29Keys / 39Keys, programmable LED backlight			
	Dimension (L x W x H)	170 x 60 x 30 mm			
	Weight ⁴	Approx. 240g			
User environment	Operating temperature	-10° to 60° C / 14° to 140° F			
	Storage temperature	-20° to 70° C / -4° to 158° F			
	Humidity (non-condensed)	Storage: 5% to 95% / Operating: 10% to 90%			
	Impact resistance	Multiple 1.8m / 6ft. drops onto concrete, 5 drops on each side, 1,000 tumbles at 1m / 3ft, IP65			
	Electrostatic discharge	± 15kV air discharge / ± 8kV direct discharge			
EMC regulation	FCC, CE, BSMI, NCC, RCM, IC, CCC, SRRC, TELEC				
Development support	GCC C Compiler and BASIC Compiler				
Applicable software	FORGE Application Generator, Remote Console	FORGE Application Generator, MIRROR Terminal Emulator, Remote Console, Text Browser	FORGE Application Generator, Remote Console		
Cradles	Charging and Communication Cradle, Cradle Kit				
Accessories	Hard Shell, Pistol Grip, Snap-on Cable, Battery Charger, Wristband				
Warranty	1 year				

1. Based on one standard laser scan per five seconds with level 1 backlight.
2. Bluetooth® on; IEEE 802/11b/g/n on. The test is based on one broadcasting packet in one second.
3. Bluetooth® off; IEEE 802/11b/g/n on. The test is based on one broadcasting packet in one second.
4. Based on 8630 with Laser engine, RFID, GPS and 1100mAh battery included



ACCESSORIES



Charging and Communication Cradle



Battery Charger



Cradle Kit



Pistol Grip



Hard Shell



Snap-on Cable



HEADQUARTERS
CipherLab Co., Ltd.
12F, 333 Dunhua S. Rd., Sec.2
Taipei, Taiwan 10669
Tel +886 2 8647 1166
Fax +886 2 8732 3300
www.cipherlab.com

CipherLab Electronics Trading (Shanghai) Co., Ltd.
J Room, 4F, No.728 West Yan'an Rd.
Changning District, Shanghai,
China 200050
Tel +86 21 3368 0288
Toll Free +86 400 920 0285
Fax +86 21 3368 0286

CipherLab USA Inc.
2552 Summit Ave.
Plano, Texas USA 75074
Tel +1 469 241 9779
Toll Free 888 300 9779
Fax +1 469 241 0697

CipherLab GmbH
Gießerallee 21
47877 Willich
Germany
Tel +49 2154 89777 20
Fax +49 2154 89777 32